



# Optimizing Catalog Metadata

ENSURING DISCOVERY AND ACCESS IN OUR LIBRARIES

Presented By

**Tom Adamich**

Professor, Technical Services & Reference Librarian  
Monroe County Community College

# Overview

- Why Clean Data Matters
- MCCC Use Case
- Optimizing Your Catalog
- Questions for Panel



# Poll:

---

With recent changes in library operations, what barriers to discovery and access have you seen in your institution's metadata?





# Clean Data Matters

## WHY?

- Successful discovery to answer questions and solve problems
- Uncompromised access to digital/electronic content
- True reflection of library holdings and access

# Clean Data Matters

## WHY NOW?

- Remote patron access is going to be the norm in some libraries for months to come
- Increased urgency to support distance learning
- Data assessment and catalog analysis can be undertaken by library staff working remotely





MONROE COUNTY  
COMMUNITY COLLEGE

---



# Monroe County Community College Use Case



# MCCC Use Case

- At Monroe County Community College, we need to reclassify from Dewey to LC.
- Manage changes to print/media MARC records (call number/item records)
- Relabel print/media call numbers for print/media collections

# Examples

LDR 01456cam a2200397 4500  
▼dNETUE▼dOCLCQ▼dCTD▼dOCLCO▼dOCL  
▼dERR▼dIOW▼dOCLCO▼dCPO▼dOCLCO  
019  
▼a83305043▼a989585421▼a102022809  
8  
029 1 ▼aAU@▼b000000695625  
029 1 ▼aAU@▼b000042835714  
029 1 ▼aNZ1▼b3648710  
035  
▼a(OCOLC)00000521▼z(OCOLC)83305043▼  
z(OCOLC)989585421▼z(OCOLC)1020228098  
037 ▼c5.95.  
050 00 ▼a**QA95**▼b**G33**  
082 00 ▼a**793.7/4**  
049 ▼aMAIN  
100 1 ▼aGardner, Martin,▼d1914-2010.  
245 14 ▼aThe unexpected hanging,▼band  
other mathematical diversions.  
260 ▼aNew York,▼bSimon and  
Schuster▼c[1969]  
300 ▼a255 pages▼billustrations▼c23 cm  
336 ▼atext▼btxt▼2rdacontent  
337 ▼aunmediated▼bn▼2rdamedia  
338 ▼avolume▼bnc▼2rdacarrier  
504 ▼aIncludes bibliographical references  
(pages 245-255).

## Existing LHR

LDR 00291cx a2200121zi 4500  
001 276684734  
003 OCoLC  
004 ocm00000521  
007 zu  
008 1903062u 8 4001abeng0200322  
014 1 ▼a(Sirsi) u37747▼bEVV  
852 1 ▼aEVV▼bEVVA▼cStacks  
▼**h793.74 G227**u▼t1  
876  
▼c\$5.95▼p33131000114284▼x10/69▼xAL  
ANAR

## New LHR

LDR 00289cx a2200121zi 4500  
001 276684734  
003 OCoLC  
004 ocm00000521  
007 zu  
008 1903062u 8 4001abeng0200322  
014 1 ▼a(Sirsi) u37747▼bEVV  
852 1 ▼aEVV▼bEVVA▼cStacks  
▼**hQA95**▼**i.G33**▼t1  
876  
▼c\$5.95▼p33131000114284▼x10/69▼xAL  
ANAR





# MCCC Use Case

- Reached out to Backstage Library Works early in the planning process
- Requested samples to determine data quality and validate workflows
- Looked for response to questions about impacts of changes on search patterns, etc.

# MCCC Use Case

Beyond the Dewey-to-LC reclass project, there is the bigger picture motivation **to assess materials metadata quality** and its ongoing impact on materials search/discovery (especially for virtual collections).



# MCCC Use Case: Virtual Shelf Browsing

Affirmative action : a reference handbook



Affirmative action : a reference handbook

by [Lynne Eisaguirre](#)

 Print Book ©1999

331.133 E36a

✓ Available  
MCCC Library Stacks



[Racism and justice : the case for affirmative action](#)

by [Gertrude Ezorsky](#)

 Print Book 1991

331.133 E99r

✓ Available  
MCCC Library Stacks

Send Feedback

# MCCC Use Case

How can companies like Backstage help us to answer data quality-related questions posed by?

Online Audiovisual Catalogers (OLAC)  
Streaming Media Video Acquisitions and  
Cataloging Survey

[https://pages.uoregon.edu/kelley/survey/OLAC\\_streaming\\_video\\_acquisitions\\_and\\_cataloging\\_survey.pdf](https://pages.uoregon.edu/kelley/survey/OLAC_streaming_video_acquisitions_and_cataloging_survey.pdf)

Do you alter or enhance vendor- or third party-supplied records for individual titles in any way prior to loading them into your ILS or do any clean up post-apply)

- ☐ Do not modify records
- ☐ Correct MARC tagging errors
- ☐ Correct character encoding issues
- ☐ Convert records from MARC8 to UTF-8 or vice versa
- ☐ Perform mass edits of format-related fields (e.g., form fixed fields 006/007/245\$h/300/336/337/338/538/655 for streaming video or online)
- ☐ Update formatting of name headings (such as inverting names in Authority File)
- ☐ Update name headings to match standardized forms, such as LC
- ☐ Add or correct relationship designators or relator codes
- ☐ Update topical subjects to match standardized vocabulary or local
- ☐ Update genre-form headings to match standardized vocabulary or local
- ☐ Add or edit fields relating to access or rights (506, 540, public performance rights)
- ☐ Add or correct fields for non-topical aspects of streaming video (such as country of producing entity or 046\$k for original date)
- ☐ Add or correct fields related to accessibility (such as 546 or genre-form like "Video recordings for the hearing impaired")
- ☐ Remove fields that apply only to the DVD or other tangible version (such as information about guides or special features)
- ☐ Modify URL in 856 to add proxy or other institution-specific information loading
- ☐ Edit record identifiers in 001 or 035 (add or reformat OCLC numbers or identifiers)
- ☐ Add other local fields (for tracking or loading records, local call number or collection name for discovery)
- ☐ Add information to populate items, holdings or other non-bibliographic records (e.g., Alma portfolios)
- ☐ Other \_\_\_\_\_
- ☐ I don't know

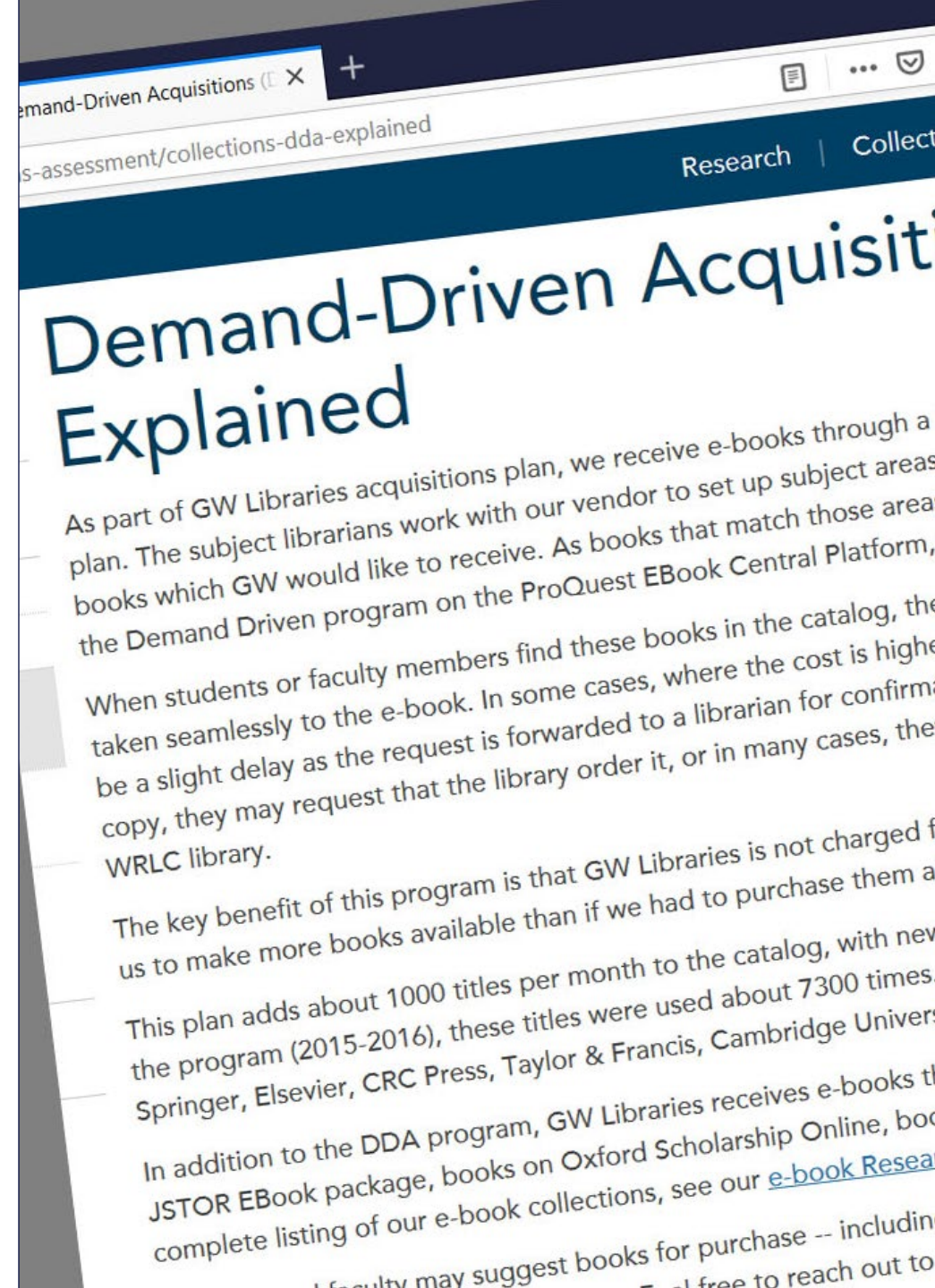


# MCCC Use Case

How can companies like Backstage help us to answer data quality-related questions posed by?

**DDA collections in library catalogs**

<https://library.gwu.edu/collections-assessment/collections-dda-explained>

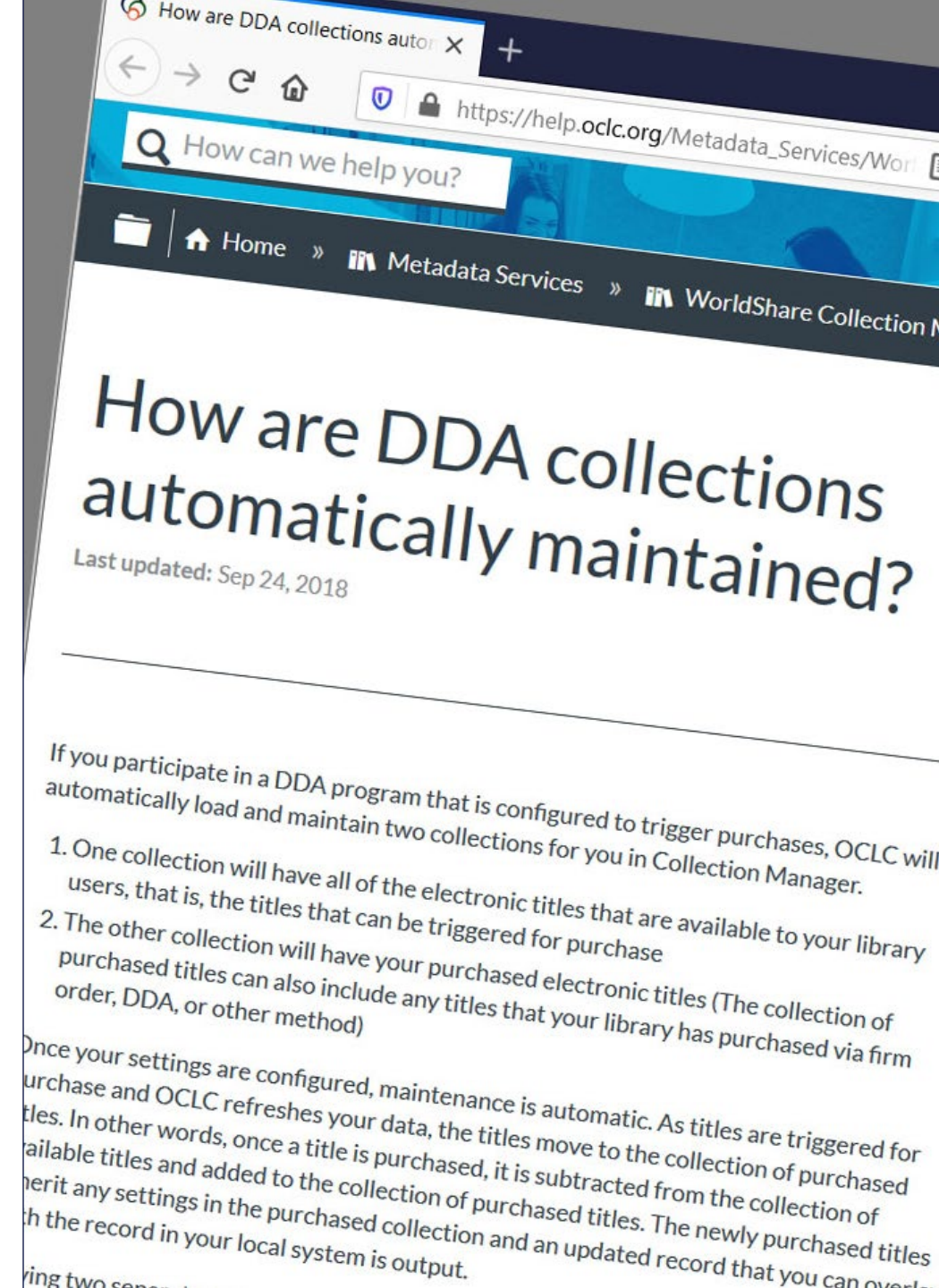


# MCCC Use Case

How can companies like Backstage help us to answer data quality-related questions posed by?

OCLC DDA management and access

[https://help.oclc.org/Metadata\\_Services/WorldShare\\_Collection\\_Manager/FAQ/How\\_are\\_DDA\\_collections\\_automatically\\_maintained](https://help.oclc.org/Metadata_Services/WorldShare_Collection_Manager/FAQ/How_are_DDA_collections_automatically_maintained)



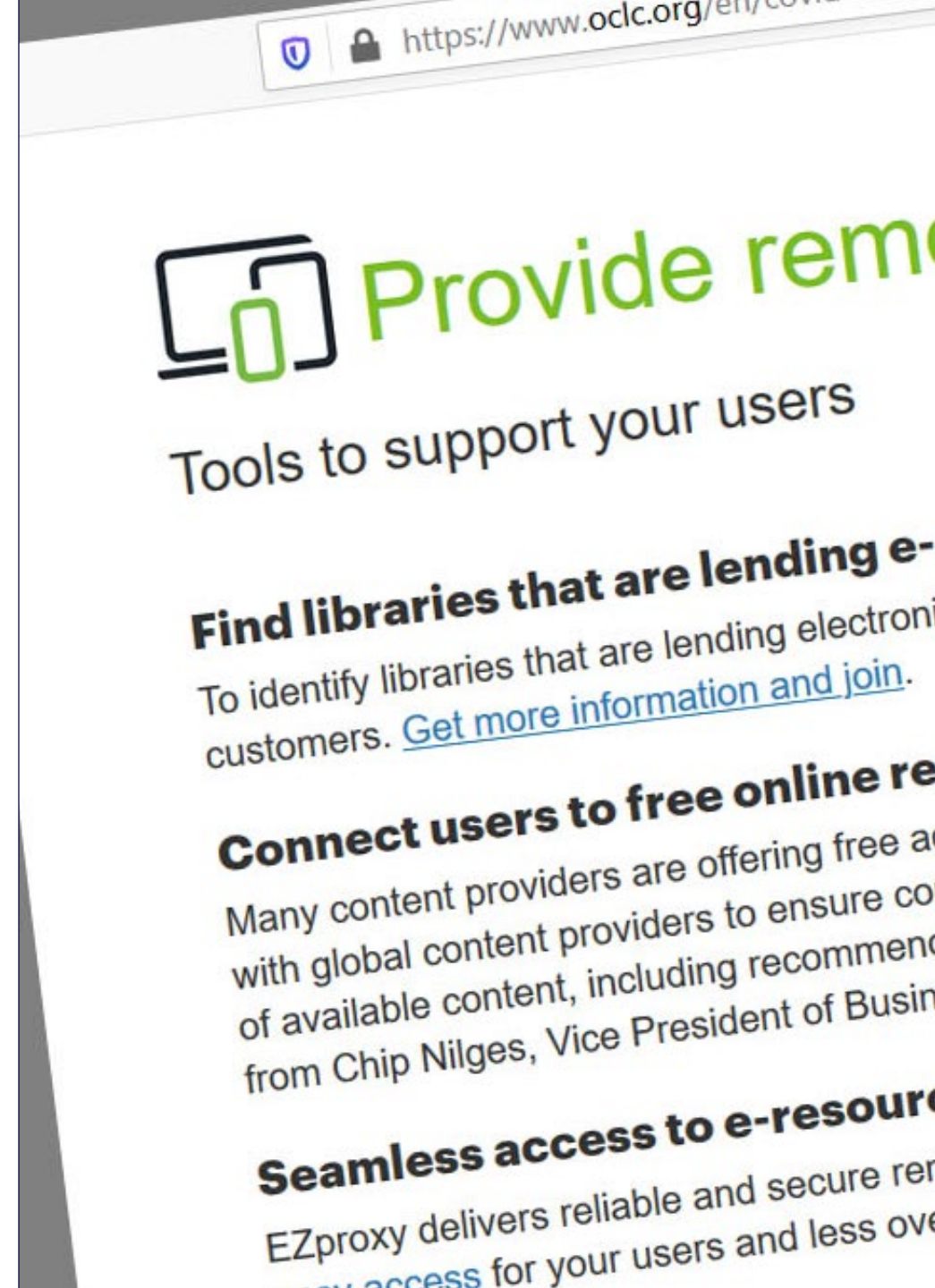


# MCCC Use Case

How can companies like Backstage help us to answer data quality-related questions posed by?

OCLC product optimization during COVID-19

<https://www.oclc.org/en/covid-19.html>





# Optimizing Your Catalog





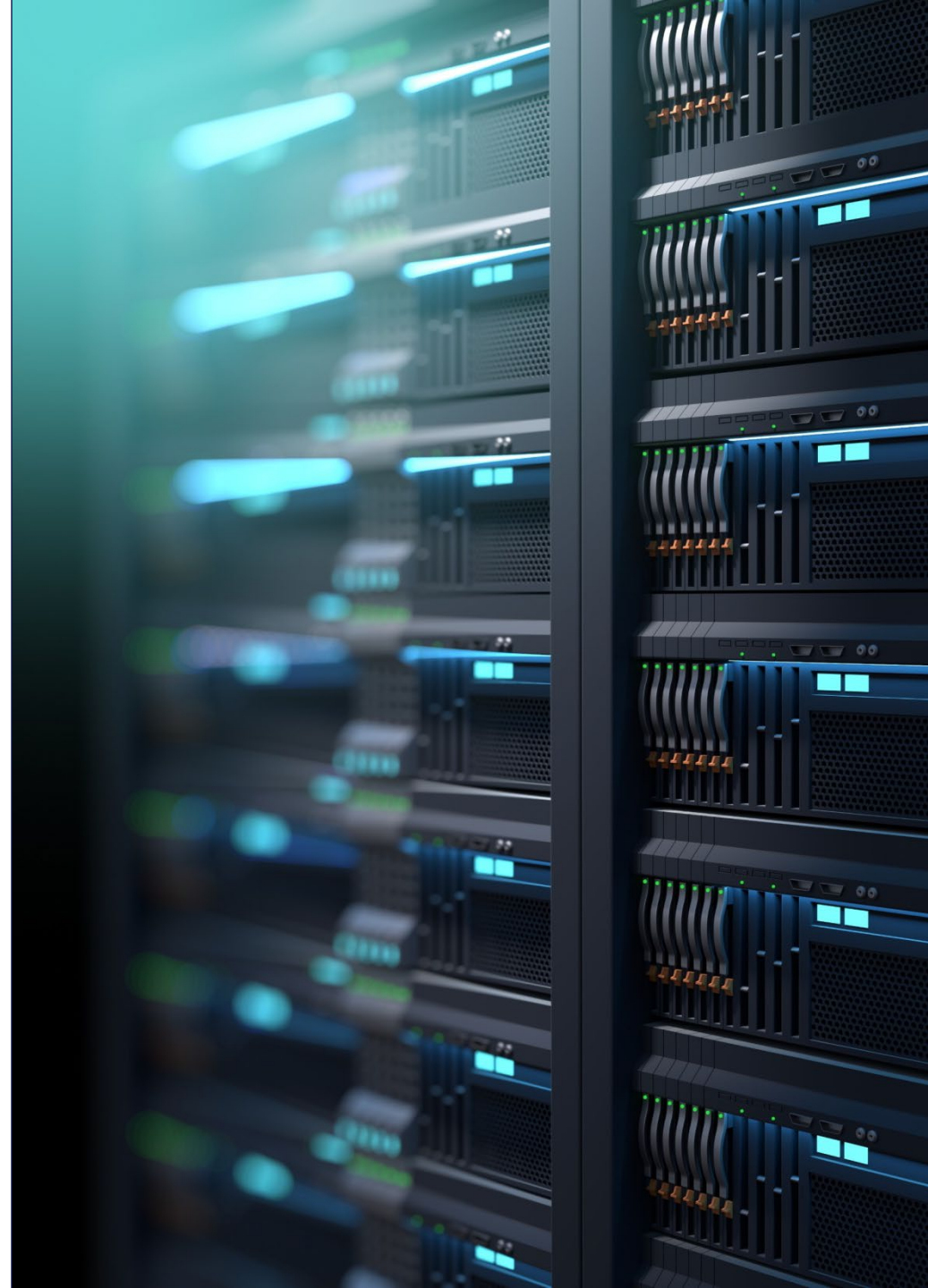
# Assessment

Ask yourself these questions:

1. Can users clearly find how to access print and digital content (especially streaming video)?
2. Are holdings information/links to related content current and easily maintained?
3. Are you confident that content access is compliant with system delivery and performance?

# Cleanup

Backstage works with existing metadata and content to understand where data discrepancies exist.



# Cleanup Examples

	830	0	<b>\$a</b> East Anglian archaeology : <b>\$b</b> report ; <b>\$v</b> no.104.
	245	<b>10</b>	<b>\$a</b> Dem Kirchenvolk die Leviten gelesen [...] : <b>\$b</b> Alltag im Spiegel süddeutscher Barockpredigten / <b>\$c</b> Elfriede Moser-Rath.
	600	10	<b>\$a</b> Moxham, Roy <b>\$x</b> Journeys <b>\$z</b> India.
	651	0	<b>\$a</b> Zaire <b>\$x</b> Religion.
Old	<b>650</b>	<b>0</b>	<b>\$a</b> Bluebeard (Legendary character)
New	600	0	<b>\$a</b> Bluebeard <b>\$c</b> (Legendary character)
Old	<b>830</b>	<b>0</b>	<b>\$a</b> Edizione critica dell'epistolario verdiano
New	800	1	<b>\$a</b> Verdi, Giuseppe, <b>\$d</b> 1813-1901. <b>\$t</b> Correspondence.
Old	130	0	<b>\$a</b> Bible. <b>\$p</b> O.T. <b>\$p</b> Apocrypha. <b>\$p</b> Ecclesiasticus. <b>\$l</b> English. <b>\$f</b> 1912.
New	130	0	<b>\$a</b> Bible. <b>\$p</b> Ecclesiasticus. <b>\$l</b> English. <b>\$f</b> 1912.
	<b>650</b>	<b>0</b>	<b>\$a</b> Baird, John Logie, <b>\$d</b> 1888-1945.
	650	0	<b>\$a</b> Cowboys - West (U.S.)





# Updates & Enrichment

Backstage works with customers to map out the process for data modification/additions (including global changes and enhancements) with the goal of optimizing content access, performance, and accountability measurements.



# KBART Update Examples

	A	B	C	D	E	F	G			
1	publication_title	print_identifier	online_identifier	date_first	num_first	num_first	date_last	num		
2	Trial handbook, Fall 2016	9781402427732	9781402427732							
3	Asset-based lending	9781402416408	9781402416408							
4	Insurance regulation answer book (2017 edition)	9781402426339	9781402426339							
5	Transfer pricing answer book (2016 edition)	9781402426162	9781402426162							
6	Trial handbook	9781402418075	9781402418075							
7	Derivatives deskbook	9781402421655	9781402421655							
8	Faber on mechanics of patent claim drafting	9781402424267	9781402424267							
9	Bankruptcy deskbook									
10	Initial public offerings									
	Q	R	S	T	U	V	W	X	Y	
1	publication_date_mon	date_mon	monograph	monograph_edition	first_editor		parent_pu	preceding	access_ty	oclc_nu
2	monograph	2016							P	1030290
3	monograph	2011			Seventh edition				P	1030291
4	monograph	2016			2017 edition	Pruitt, John S			P	1030294
5	monograph	2016			2016 edition	Blair, David B			P	1030291
6	monograph	2012							P	1030292
7	monograph	2014			Second edition				P	1030291
8	monograph	2015			Seventh edition				P	9220471
9	monograph	2014			Fifth edition				P	1030291
10	monograph	2009							P	1030294
11	monograph	2017			2017 edition	Robt. Anderson			P	1030294

# Enrichment Statistics

## Section 2: Field Distribution

### Control Fields (0XX)

Tag	Bibs with 0 fields	Bibs with 1 field	Bibs with 2+ fields	Total Fields	Avg Fields per Bib	Max Fields in one Bib	Changed Fields	Percent Changed
007	525	315	160	635	0.63	2	23	3.60%
008	8	992	0	992	0.99	1	148	14.90%
010	589	411	0	411	0.41	1	289	70.30%
020	441	276	283	965	0.96	12	22	2.30%
024	803	129	68	270	0.27	6	1	0.40%
037	772	221	7	236	0.24	3	7	3.00%
040	40	960	0	960	0.96	1	58	6.00%
041	819	181	0	181	0.18	1	45	24.90%
043	690	310	0	310	0.31	1	1	0.30%
072	992	4	4	15	0.01	5	1	6.70%

### Main and Added Entries (1XX,4XX,7XX,8XX)

Tag	Bibs with 0 fields	Bibs with 1 field	Bibs with 2+ fields	Total Fields	Avg Fields per Bib	Max Fields in one Bib	Changed Fields	Percent Changed
100	439	561	0	561	0.56	1	72	12.80%
110	966	34	0	34	0.03	1	1	2.90%
130	960	40	0	40	0.04	1	5	12.50%
490	782	200	18	236	0.24	2	135	57.20%
700	476	248	276	1,744	1.74	40	191	11.00%
710	652	280	68	490	0.49	18	30	6.10%
730	887	92	21	155	0.16	8	86	55.50%
740	978	8	14	76	0.08	15	3	3.90%
800	967	33	0	33	0.03	1	4	12.10%

### Descriptive Fields (2XX,3XX)

Tag	Bibs with 0 fields	Bibs with 1 field	Bibs with 2+ fields	Total Fields	Avg Fields per Bib	Max Fields in one Bib	Changed Fields	Percent Changed
240	939	61	0	61	0.06	1	18	29.50%
245	0	1,000	0	1,000	1	1	221	22.10%
250	754	246	0	246	0.25	1	94	38.20%
255	998	2	0	2	0	1	1	50.00%
264	7	573	420	1434	1.43	3	669	46.70%
300	10	990	0	990	0.99	1	548	55.40%
306	949	51	0	51	0.05	1	0	0.00%
336	1	957	42	1048	1.05	5	145	13.80%
337	1	981	18	1017	1.02	2	139	13.70%
338	1	983	16	1015	1.01	2	127	12.50%

### Subject Access Fields (6XX)

Tag	Bibs with 0 fields	Bibs with 1 field	Bibs with 2+ fields	Total Fields	Avg Fields per Bib	Max Fields in one Bib	Changed Fields	Percent Changed
600	864	87	49	203	0.2	6	58	28.60%
610	966	28	6	41	0.04	3	5	12.20%
630	988	10	2	16	0.02	4	6	37.50%
650	136	192	672	2,966	2.97	16	249	8.40%
651	821	119	60	272	0.27	6	22	8.10%
655	831	77	92	446	0.45	17	91	20.40%
690	516	434	50	569	0.57	6	2	0.40%



# The Role of a Vendor

During unusual/crisis times (COVID-19 is an example), the need to perform strategic planning (for when the situation ends) requires a vendor like Backstage that is:

- **Responsive**  
Timely, thoughtful replies to inquiries, samples, follow-up communications
- **Understanding**  
Willing to listen and offer recommendations
- **Proactive**  
Offers suggestions beyond the project scope that may be related/future



# Questions & Answers



**Tom Adamich**

Technical Services Librarian  
Monroe County Community College



**Lara Henry &  
Laura Folaumahina**

Metadata Services  
Backstage Library Works



**Casey Cheney**

Automation Services  
Backstage Library Works





## Tom Adamich

Professor – Technical Services/Reference Librarian  
Monroe County Community College  
Monroe, Michigan  
734.384.4161 | [tadamich@monroeccc.edu](mailto:tadamich@monroeccc.edu)

President, Visiting Librarian Service  
New Philadelphia, Ohio  
330.364.4410 | [vls@tusco.net](mailto:vls@tusco.net)

## Backstage Library Works

Provo, Utah & Bethlehem, Pennsylvania  
1.800.288.1265 | [www.bslw.com](http://www.bslw.com) | [info@bslw.com](mailto:info@bslw.com)

# Thank You.